

15 16
18 17

TILLAMOOK COUNTY REWITNESS #868

SEC. 7 T 5S R 10 W., WM.
C.E.E. 1/64 COR.

HISTORICAL: G.L.O. Pg 34 5510 1872
BK. Pg 53 336-338

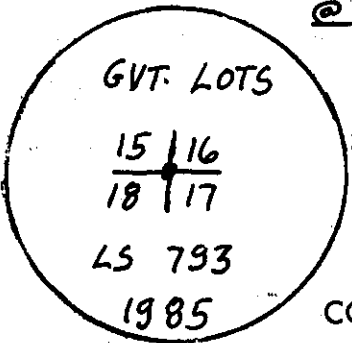
CONDITION GOOD FOUND 16X12X10 STONE MARKED X BK 53 Pg. 336

GONE IN OPEN FIELD	6" ALDER	S. 30° W. 285 LKS	G.L.O. Pg. 34
FD. NOW 48' SNAGGED OUT BUT STILL GREEN SLOPE DIST.	14" ALDER	N. 15° E. 297 LKS	G.L.O. Pg. 34
GONE	12" ALDER	N. 18° W. 65 LKS	BK. 53 Pg. 338
GONE	10" ALDER	N. 47° E. 64 LKS	BK. 53 Pg. 338

COMMENTS:

REWITNESS

1 SET 1 1/2" IRON PIPE WITH 3" BRASS CAP IN 10" CONCRETE CYLINDER
@ POSITION OF FOUND 14" X 8" X 9" STONE MARKED X
* 60" Hat Section NORTH 13 FEET



NEW ACCESSORY:

* 9" SPRUCE	N. 2° W. 37'	L 15 B.T. C.S.
* 23" SPRUCE	N. 84° W. 64' 86'	L 15 B.T. C.S.

COMMENTS: THIS CORNER IS LOCATED @ THE NORTH EDGE OF ACLEARED PASTURE IN REMAINS OF OLD FENCE CORNER N-W-E.

IN THE PRESENCE OF: DAN MCNUTT AL DVORAK

DATE: 4-8-85

PHOTO#:

* = County corner tag affixed.

TITLE